



Delivering Life-changing Value as a GSP

Kyowa Kirin Co., Ltd.
Corporate Profile

GSP: Global Speciality Pharmaceutical Company

What we stand for

In February 2021, Kyowa Kirin launched its FY2021-2025 Medium-term Business Plan, which is aimed at realizing our new vision for the Group by 2030. Guided by the vision and the business plan, we aim to create social and economic value with medicines that make patients smile by feeling dramatic improvements in quality of life. Unified by a deep commitment to this vision, every employee in the Group will continue working to fulfill the expectations of all stakeholders.

Our Philosophy

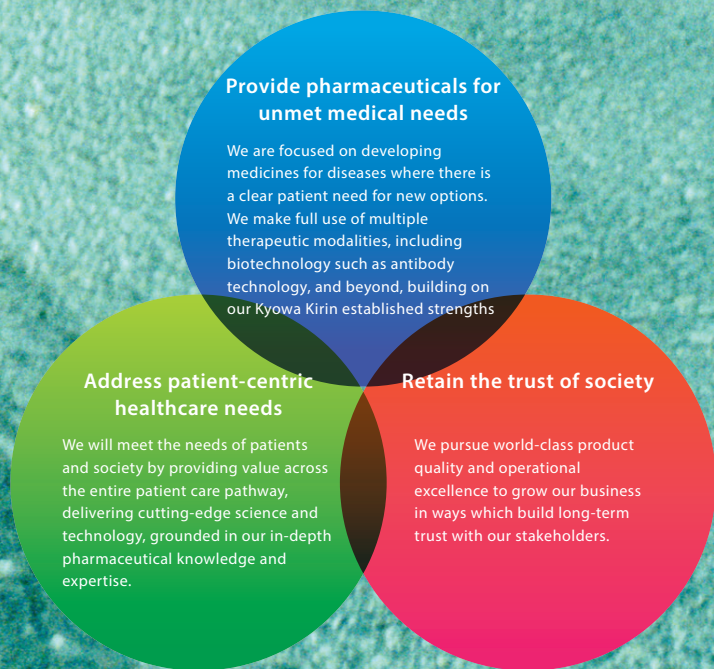
The Kyowa Kirin Group companies strive to contribute to the health and well-being of people around the world by creating new value through the pursuit of advances in life sciences and technologies.

Core Values



Vision

Kyowa Kirin will realize the successful creation and delivery of life-changing value that ultimately makes people smile, as a Japan-based Global Specialty Pharmaceutical company built on the diverse team of experts with shared passion for innovation.



Contents

What we stand for.....	P.1
Life-changing technology	P.2
Life-changing throughout the world.....	P.4
What makes things life-changing.....	P.6
Creating Shared Value.....	P.8
Corporate Data.....	P.9

A young girl with a stethoscope around her neck, smiling and holding a white teddy bear. The background is a bright, out-of-focus indoor setting. A large red circular graphic is overlaid on the right side of the image, containing the main title and a paragraph of text.

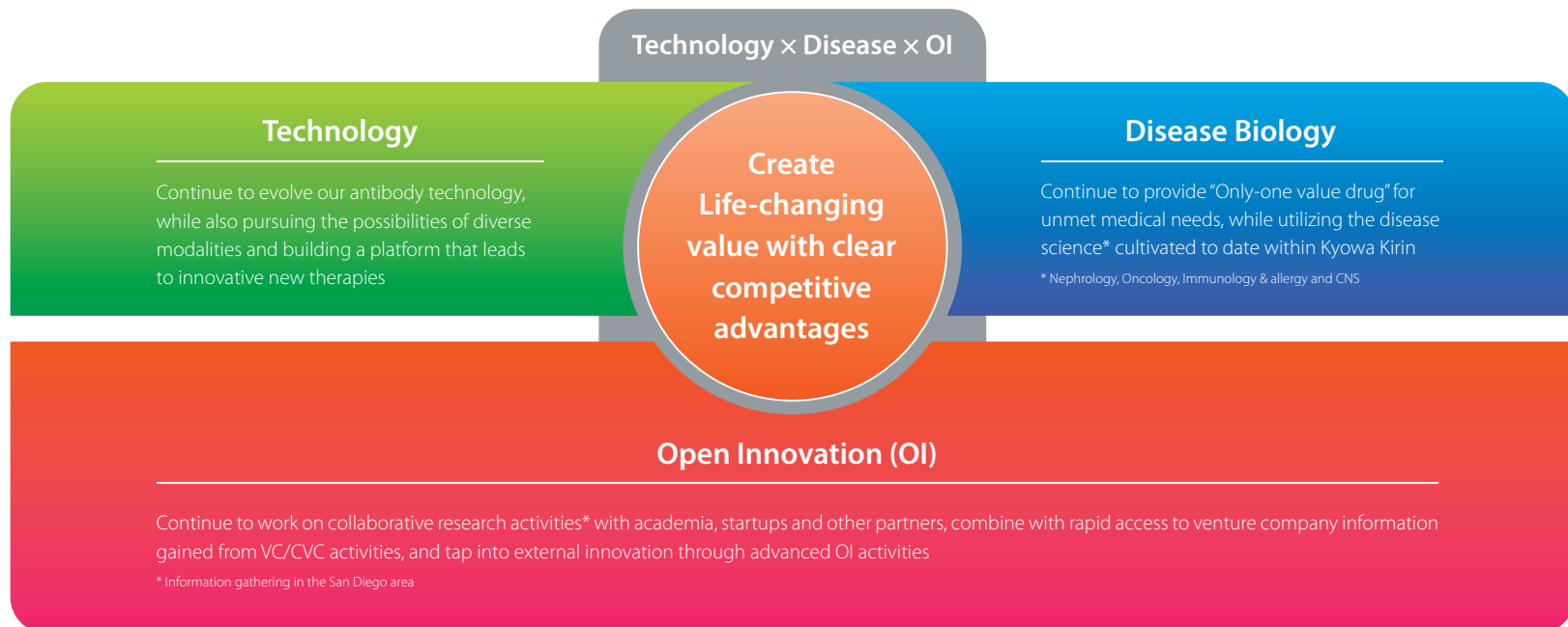
Life-changing technology

Kyowa Kirin is focusing on addressing patient-centric healthcare needs. We aim to satisfy unmet medical needs of patients that do not have access to effective treatments by harnessing open innovation to maximize our antibody technology and by using other innovative technologies and our long-established strengths in disease expertise.

We will consistently create life-changing & Only-one value that makes patients smile.

We aim to create life-changing value by selecting efficient drug discovery targets using our platform of revolutionary proprietary technologies and through open innovation with partners that possess distinctive strengths.

Research & development concept



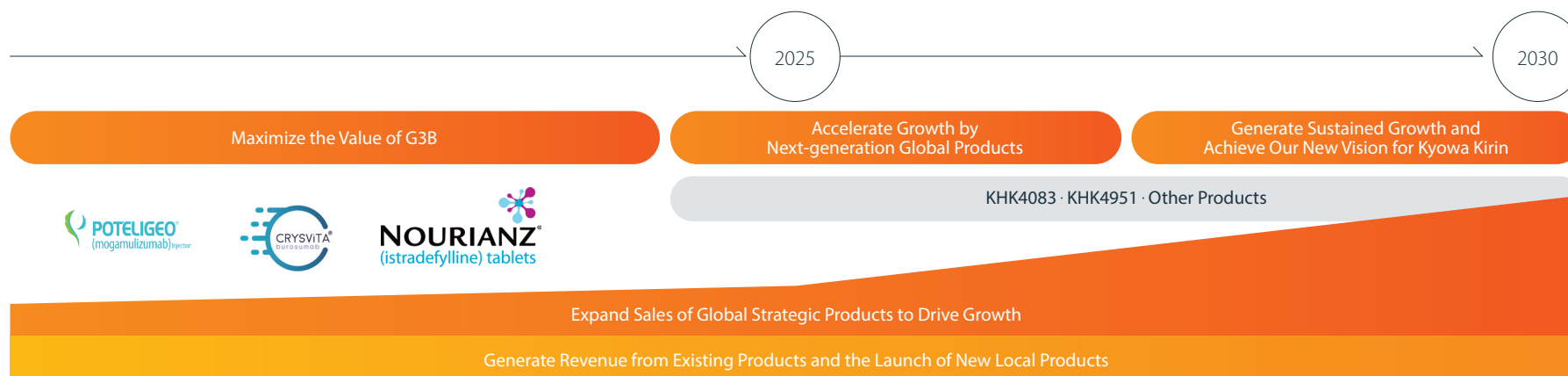
A photograph of three diverse professionals (two men and one woman) in a meeting. They are gathered around a wooden table, looking at a laptop. The man on the left is pointing at the screen, the woman in the middle is smiling, and the man on the right is looking on. The background is a bright window with a view of trees. A large red circle is overlaid on the right side of the image, containing the main text.

Life-changing throughout the world




We are extending our global reach to provide products for unmet medical needs worldwide.

Maximize the Value of Global Three Brands (G3B)

Medium- to Long-term Outlook and FY2021–2025 MTBP



Maximize the value of three global products

<p>Crysvita</p> 	<p>Establish Crysvita as the standard treatment for XLH / unresectable TIO and contribute as a global leader in these therapeutic areas through the sustainable growth of the product.</p>
<p>Poteligeo</p> 	<p>In the global market, clarify the importance of treatment for early-stage CTCL patients and contribute through disease control and improvement of quality of life in Japan, establish its importance as a treatment for ATL.</p>
<p>Nouriant/Nourianz</p> 	<p>Collect clinical evidence, establish treatment positioning and develop a standard of care worldwide for wearing-off management in combination with levodopa.</p>

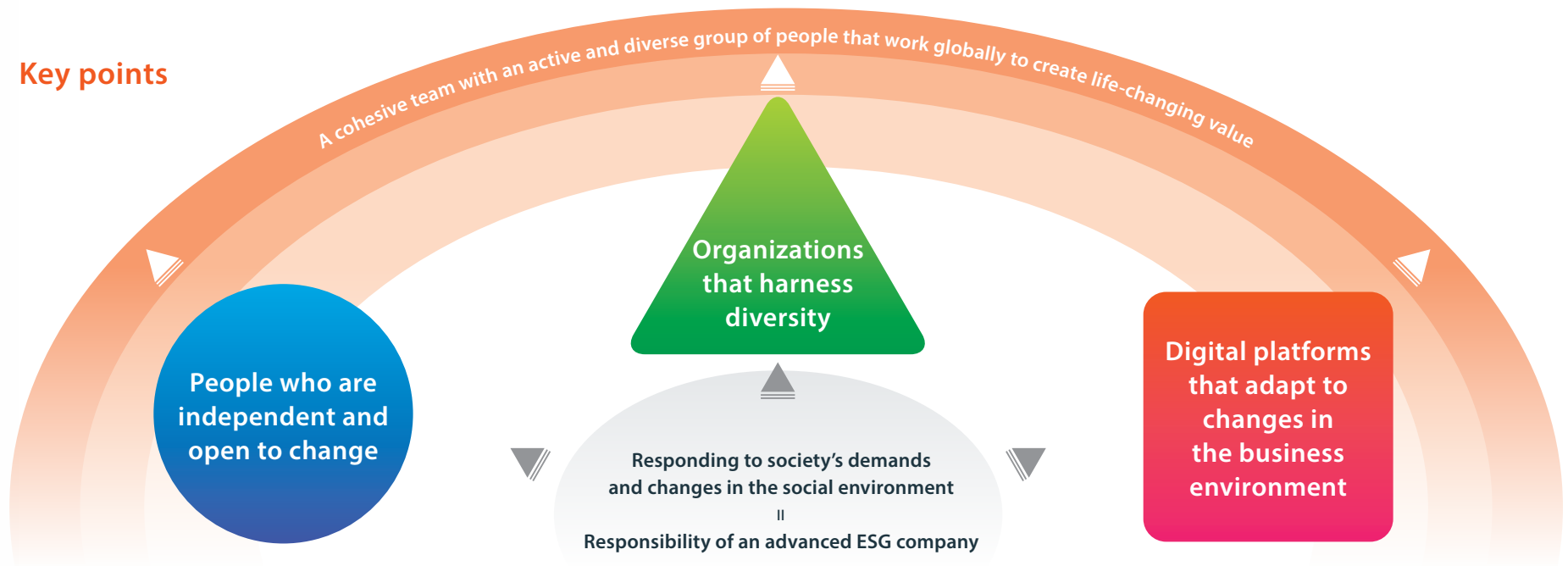
A photograph of two women, one younger and one older, sitting together and looking at a tablet. The younger woman is on the left, smiling and pointing at the screen. The older woman is on the right, also smiling and looking at the screen. They are both wearing light-colored sweaters. The background is bright and slightly out of focus.

What makes things life-changing

At Kyowa Kirin, we believe people are the origin of innovation.
By cultivating employees who take the initiative and are open to
change, we aim to build a diverse team of people with a shared
passion for innovation to help us create life-changing value.

Reinforce Human Resources and Structures that Support the Creation of Life-changing Value

Key points



Invest in human resources and better working environments

- Invest in human resources development
- Offer market-competitive compensation and benefits
- Wellness Action 2025^{*1}
- Launch a global human resources system (HRIS)

Corporate culture suited to a Japan-based GSP^{*2}

- Embed our Core Values across the Group (transform corporate culture)
- Compliance and risk sensitivity
- Promote diversity and inclusion (adopt the DE&I Statement^{*3} and increase ratio of female managers worldwide)

Reinforce digital platforms

- Create platforms to utilize data across business divisions
- Implement projects to drive DX and create new value (establish data platform team, sales & marketing division digital promotion office, etc.)
- Take advantage of digital tools for workstyle innovation

^{*1} Wellness Action 2025: Our plan to roll out health promotion activities worldwide to address the key issue of employee health as a pharmaceutical company

^{*2} Global Specialty Pharmaceutical company ^{*3} Promote diversity, equity and inclusion (adopt DE&I Statement^{*3}, increase the ratio of female managers, etc.)







Creating Shared Value







Using CSV management to increase corporate value

The Kyowa Kirin Group is implementing CSV management to increase corporate value by balancing the “creation of economic value” with the “creation of social value.”

As part of CSV management, we have identified priority material issues that need to be addressed, based on their impact on the sustainability of society and on the Group’s business operations. These issues have been incorporated into the Medium Term Business Plan as materiality.

Kyowa Kirin Group’s materiality

Topics for value creation		
Core strategies	Materiality	Related SDGs
Provide pharmaceuticals for unmet medical needs	Creation of innovative drugs	 
	Maximize product value	
	Pipeline expansion	
Address patient-centric healthcare needs	Patient advocacy	
	Access to medicine	
Strengthen human resources and infrastructure to realize life-changing value	DE&I	
	Talent portfolio	
	Corporate culture	
	Digital transformation	

Topics for value enhancement		
Core strategies	Materiality	Related SDGs
Retain the trust of society	Quality assurance and a stable supply of products	 
	Reducing environmental impact	
Strengthen human resources and infrastructure to realize life-changing value	Corporate governance	
	Ethics and transparency	
	Reinforce risk management	

Corporate Data

Company Name	Kyowa Kirin Co., Ltd.	Executive Director of the Board	President and Chief Executive Officer Masashi Miyamoto
Established	July 1, 1949	Head Office	1-9-2, Otemachi, Chiyoda-ku, Tokyo 100-0004, Japan TEL: +81-3-5205-7200
	* Date of establishment of former Kyowa Hakko Kogyo Co., Ltd. Company name changed from Kyowa Hakko Kogyo Co., Ltd. following merger with Kirin Pharma Company, Limited on October 1, 2008. * Company name changed to Kyowa Kirin Co., Ltd. on July 1, 2019.	Revenue (consolidated)	¥398,371 million (Fiscal Year ended December 31, 2022)
Capital	¥26,745 million (As of December 31, 2022)	Main Business	Pharmaceutical research, development, manufacture, sale, import and export, etc.
Number of Employees	5,982 (Consolidated basis, as of December 31, 2022)	Parent Company	Kirin Holdings Company, Limited

Main Business Offices

Branches	Research Laboratories
Sapporo Branch	Tokyo Research Park
Tohoku Branch	Fuji Research Park
Tokyo Branch	Bio Process Research and Development Laboratories
Chiba-Saitama Branch	CMC R&D Center
Kita Kanto-Koshinetsu Branch	
Yokohama Branch	
Nagoya Branch	Plants
Osaka Branch	Takasaki Plant
Keiji-Hokuriku Branch	Ube Plant
Chugoku-Shikoku Branch	
Kyusyu Branch	

Main Group Companies

Japan	
FUJIFILM KYOWA KIRIN BIOLOGICS Co., Ltd.	Kyowa Kirin Frontier Co., Ltd.
	Kyowa Kirin plus Co., Ltd.
Overseas	
Asia/Pacific	North America
Kyowa Kirin Asia Pacific Pte. Ltd.	Kyowa Kirin USA Holdings, Inc.
Kyowa Kirin China Pharmaceutical Co., Ltd.	Kyowa Kirin, Inc.
Kyowa Kirin Korea Co., Ltd.	BioWa, Inc.
Kyowa Kirin Taiwan Co., Ltd.	Kyowa Kirin Canada, Inc.
Kyowa Kirin (Hong Kong) Co., Ltd.	
	EMEA (Europe, Middle East, Africa)
	Kyowa Kirin International plc

Commitment to Life

Countless precious lives surround us.
Brought into this world, blessed,
raised with loving care – full of dreams, happiness as the goal of life.
Deeply instill in us,
Infinite possibilities for us, a pharmaceutical company.
and know that what we work for – the most precious presence of all on this planet.

Believe in ourselves, believe in our power, believe in what we have built together.
Not a large company, but with qualities like none other.
History so unique we can be proud of, technology unmatched,
And superior human beings that cannot be found elsewhere.

Be brave; do not shy away from challenges. Have passion; break away from the norm.
Innovation is not just about growth – but instead a leap towards the future,
a grand growth with wings.
Wings never to be given to those who settle for the status-quo.

Don't just make medicine. Make people smile, bring light to their lives.
How strongly one longs to live. How deeply one is loved by their loved ones.
How sincerely one desires to help the one life
they dedicate themselves to in the field of medicine.
Stay receptive, sharpen your sensitivities.
Let us become the top company in the world who cares the most for life.
Strength is not what saves the world. A caring heart is what the world calls for.

Strive to become a superb team.
One human being, excellent or not, is ever so powerless,
as a power of one, mistakes, even a possibility.
Show the world the excellence of coming together. Amazing results, when we become one.
Be driven. Think of those fighting for their lives every day.
Their strong devotion to life speaks to our hearts.
Hurry – do not scurry, but we must not stand still. Stay sincere, always – may that be our vow.
We make medicine. This is, our walk of life.

Work, can bring happiness. Remember this, always.
Born on this planet in various parts of the globe, passing through life in different ways,
And like a miracle we found one another – our jobs, our team, our company.
Know this, and be fulfilled, always.
Be thankful of what you have, pour your heart and soul into the mission you were given,
Be proud of your work, the work to save precious lives.
We are, each and everyone of us, Kyowa Kirin.

Taking the walk of life, one life at a time.